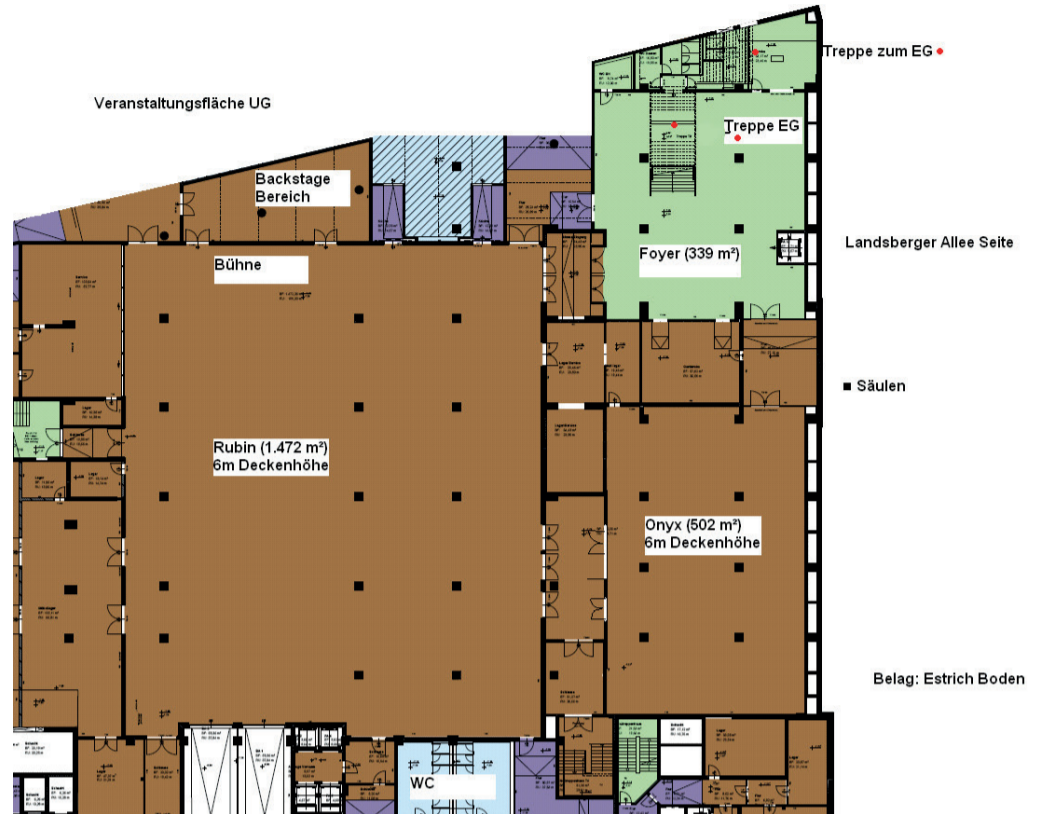




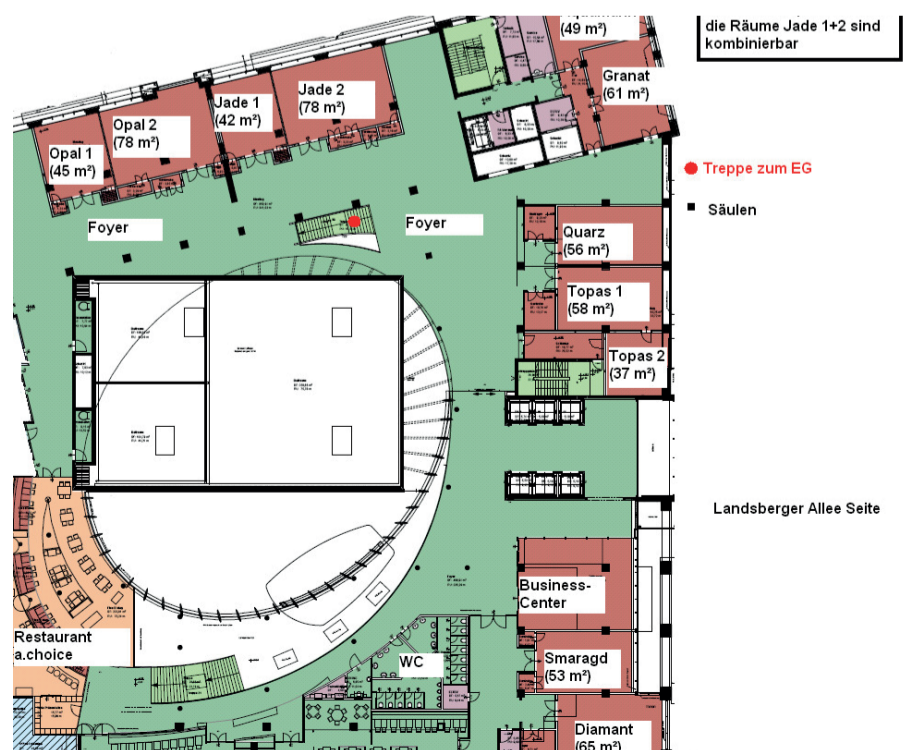
## Basement



## First Floor



## Second Floor



# Basement

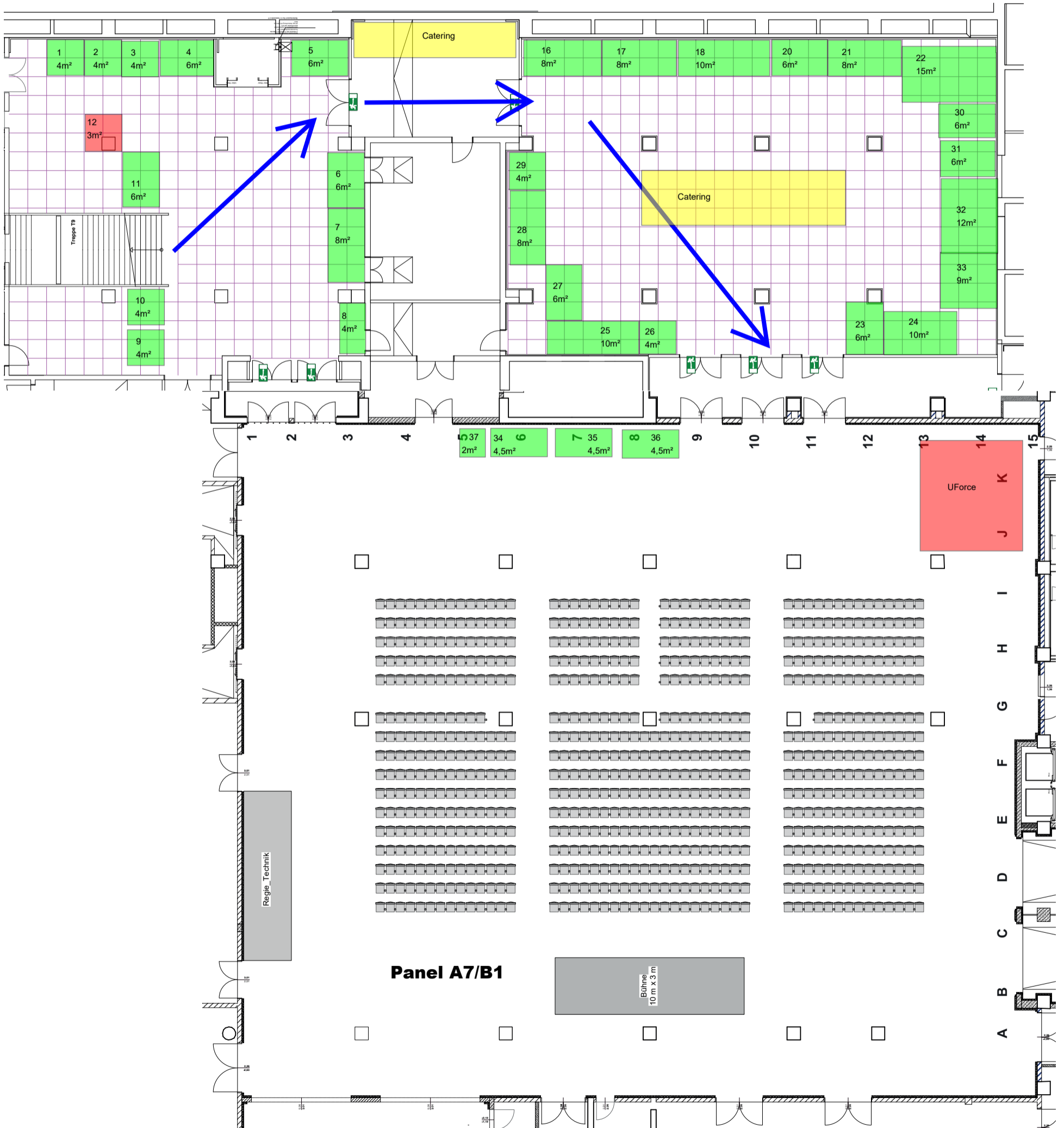
- 1 - Kommando CIR
- 2 - Drivlock
- 3 - StackIT / Schwarz Digits
- 4 - StackIT / Schwarz Digits
- 5 - VMRay
- 6 - Elbit Systems
- 7 - Kiteworks / Aquilo
- 8 - Hagenuk / ISC2
- 9 - Nato
- 10 - Spread
- 11 - CUI
- 12 - BDLI
- 16 - Pexip
- 17 - Nammo
- 18 - Taurus Systems
- 20 - Google Germany
- 21 - Patria
- 22 - Thales
- 23 - Cateva Group
- 24 - Stella Doradus
- 25 - Trendmicro
- 26 - Sectra Communications
- 27 - Trendmicro
- 28 - BPNE
- 29 - Gomspace
- 30 - Reflex Aerospace
- 31 - Accenture
- 32 - Parametric Technology
- 33 - GermanTec Automotive FC-LLC
- 34 - EvoLogics
- 35 - PD - Berater
- 36 - PD - Berater
- 37 - EvoLogics

Foyer:

All materials used must be flame retardant (fire protection class A1/A2 verifications and certificates are required).  
Please clarify in advance what will be used in the relevant areas.

Booth 22

Directly at / or behind the stand is a grille to the ventilation duct, this must remain free!



# First Floor

- 0 - BDSV
- 1 - GDELS
- 2 - Siemens
- 3 - ARX Robotics
- 4 - Secusmart
- 5 - Secusmart
- 6 - secunet Security Networks
- 7 - IBM
- 8 - Kobra Infosec
- 9 - Rivada Space
- 10 - Schmidt u. Bender
- 11 - ELT Group
- 12 - AFCEA
- 13 - G.I.A.N.T. Powerboats
- 14 - G.I.A.N.T. Powerboats
- 15 - Systematic
- 16 - BAE Systems
- 17 - Nölken
- 18 - WIIS
- 19 - Chainguard
- 20 - Blaues Sofa
- 21 - Blaues Sofa
- 22 - Damen Naval
- 23 - Infodas
- 24 - Hunna
- 25 - valantic
- 26 - Data Respons Solutions
- 27 - Gereon
- 28 - Rohde & Schwarz
- 29 - Bechtle
- 30 - BWI
- 31 - Kommando Luftwaffe
- 32 - IAV
- 33 - Lufthansa Technik
- 34 - IAI
- 35 - IAI
- 36 - Saab
- 37 - KPMG
- 38 - Airbus
- 39 - Airbus
- 40 - Airbus
- 41 - Diehl Defence
- 42 - Saab
- 43 - Hensoldt
- 44 - MBDA
- 45 - V4Smart
- 46 - WB Electronics
- 47 - Vincorion
- 48 - Kongsberg
- 49 - Northrop Grumman LITEF
- 50 - Northrop Grumman LITEF
- 51 - Walaris
- 52 - Cyber Range

Booth 5

Automatic doors open automatically in the event of a fire and keep the room smoke-free and ventilated. These doors must remain free.



